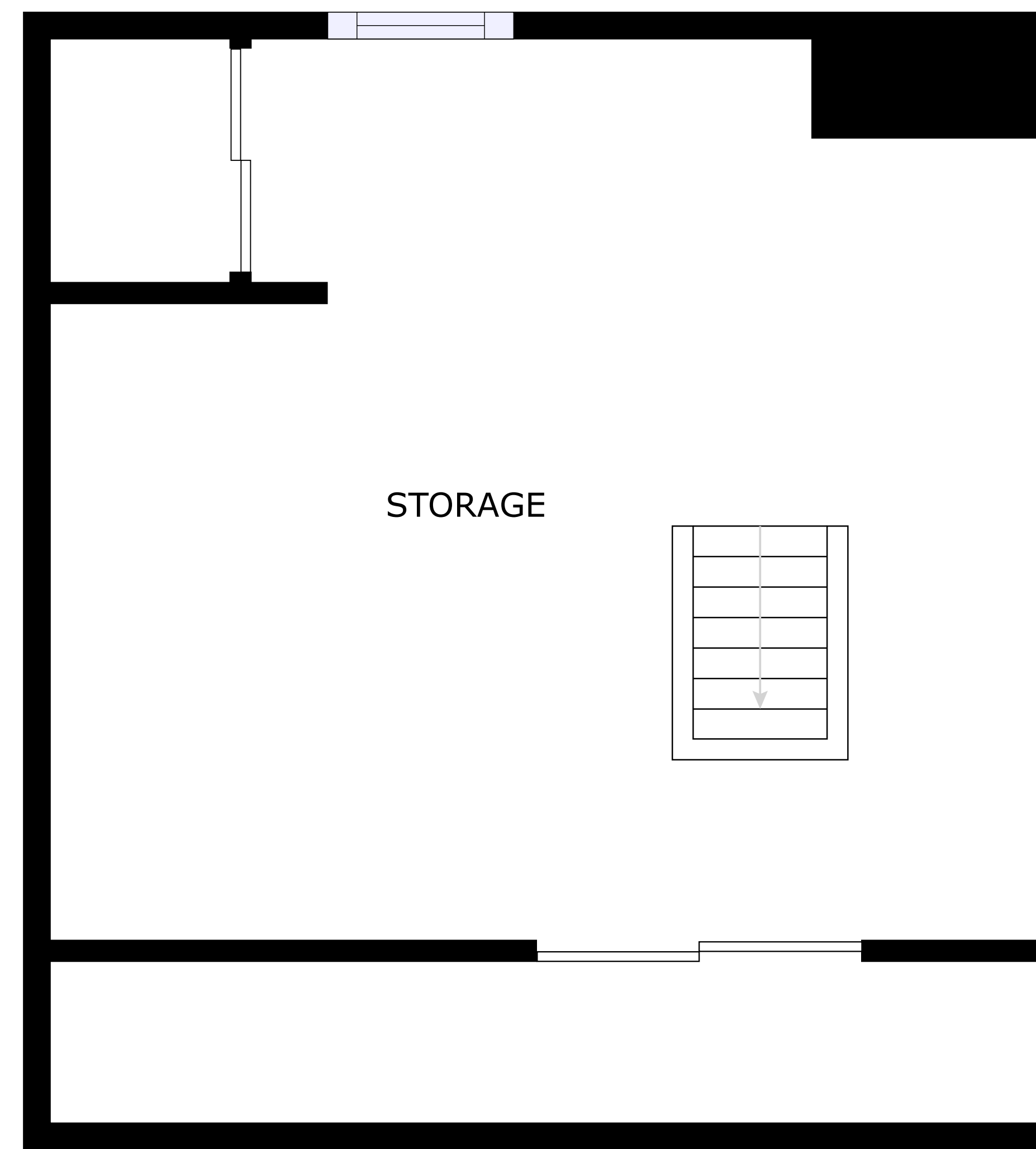
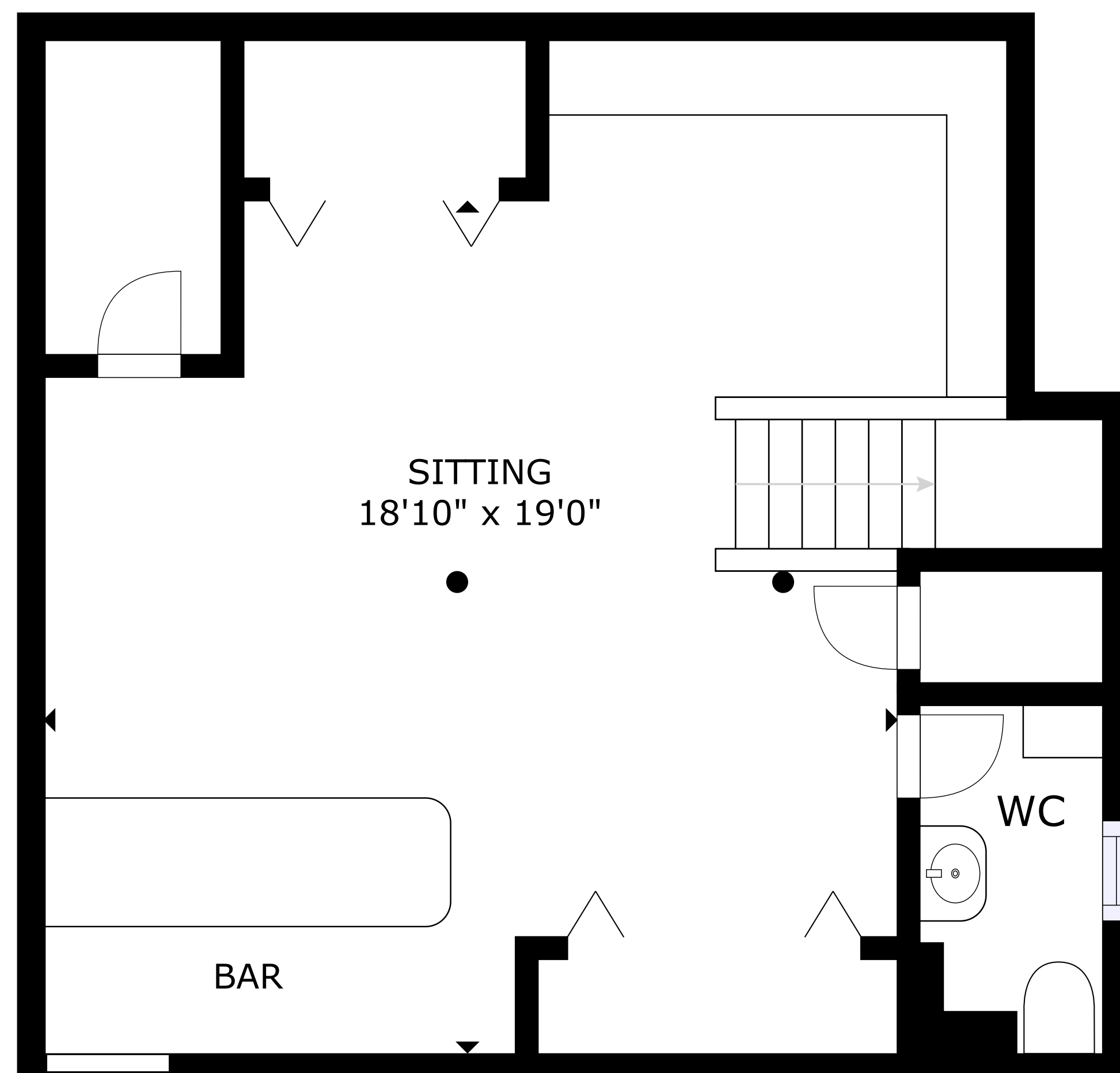


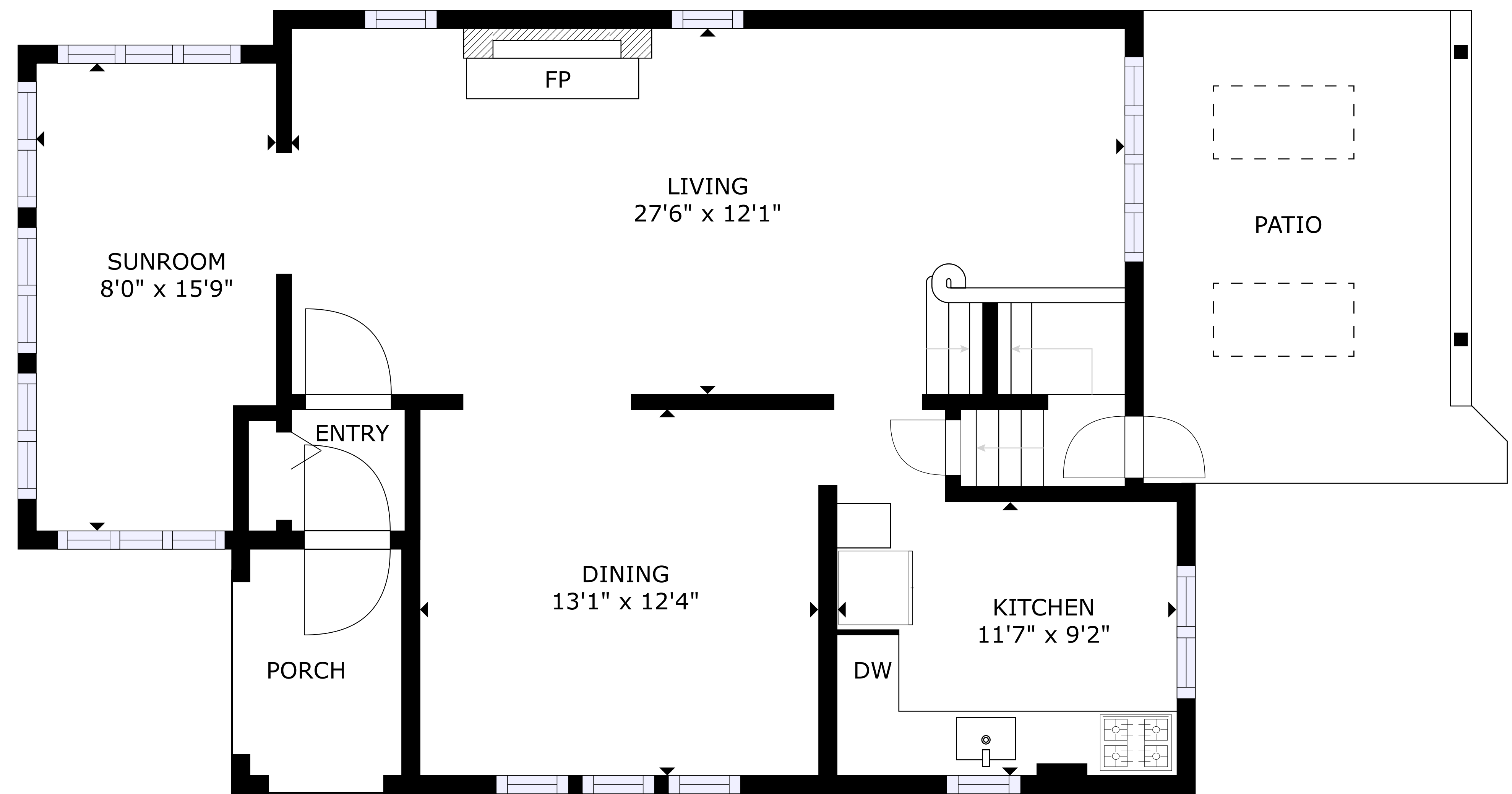
FIRST FLOOR



ATTIC



BASEMENT



GROUND FLOOR

GROSS INTERNAL AREA
 BASEMENT: 505 sq. ft, GROUND FLOOR: 804 sq. ft
 FIRST FLOOR: 634 sq. ft,
 REDUCED HEADROOM BELOW
 2.08M: 22 sq. ft, TOTAL: 1,943 sq. ft
 SIZES AND DIMENSIONS ARE APPROXIMATE, ACTUAL MAY VARY.